



THE METAVERSE IN LATIN AMERICA

AN OVERVIEW

CLAUDIA DEL POZO
FOUNDER AND DIRECTOR
EON INSTITUTE



A MEXICAN THINK-TANK TO FUTURE-PROOF LATIN AMERICA

METAVERS
EXPLORATION

DIGITAL RIGHTS AND
SAFE NEW TECH
FOR
CHILDREN

FUTURE OF
WORK
AND THE DIGITAL
ECONOMY

TECHNOLOGY
PRIVACY &
FAIRNESS

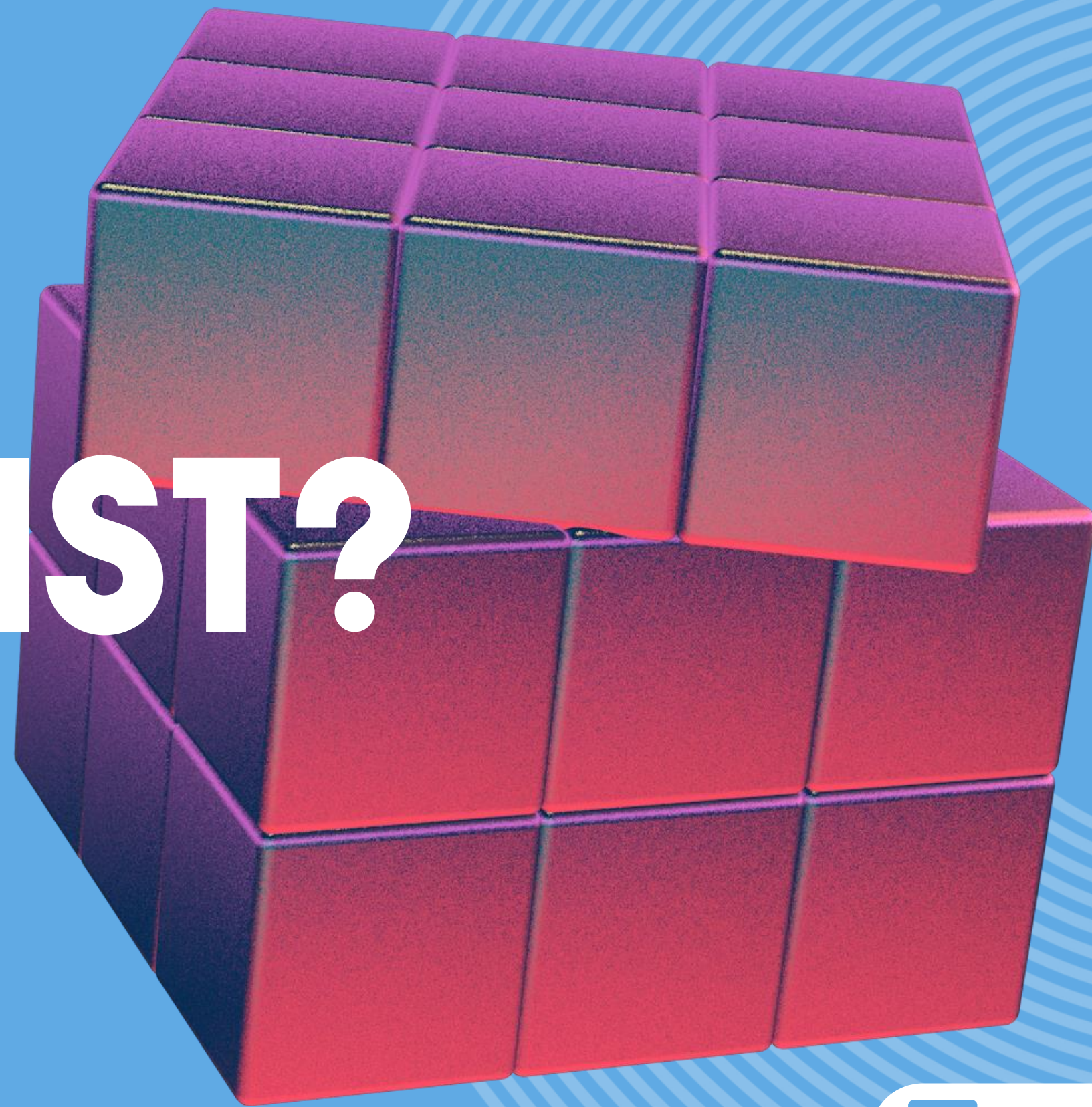
COLLABORATIVE
MECHANISMS FOR
AI
REGULATION

TWO BUZZING QUESTIONS



EON INSTITUTE

DOES IT EXIST?



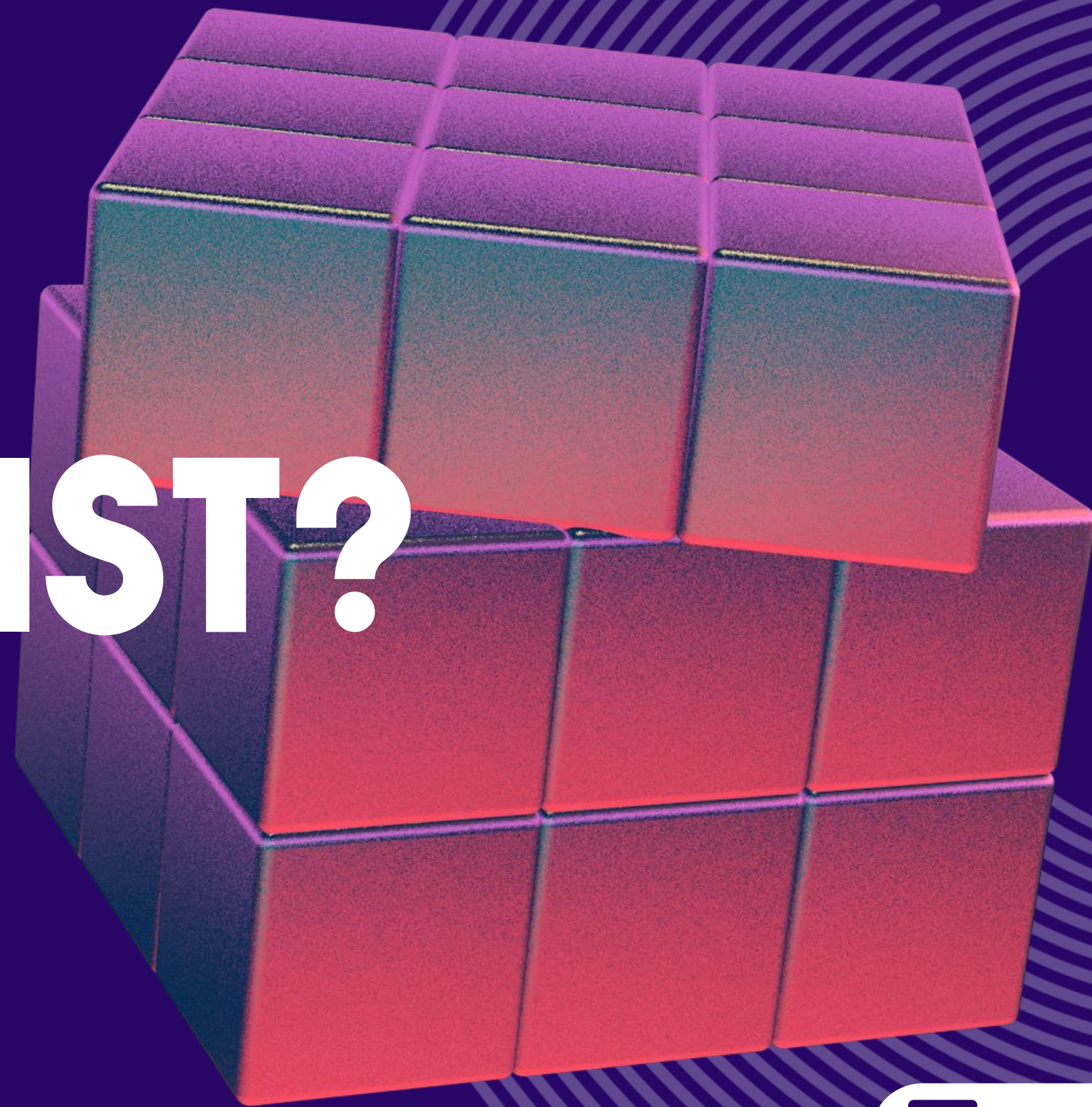
EON INSTITUTE

DOES IT EXIST?

Not for another 5-10 years (Forbes, 2022)

DOES IT EXIST?

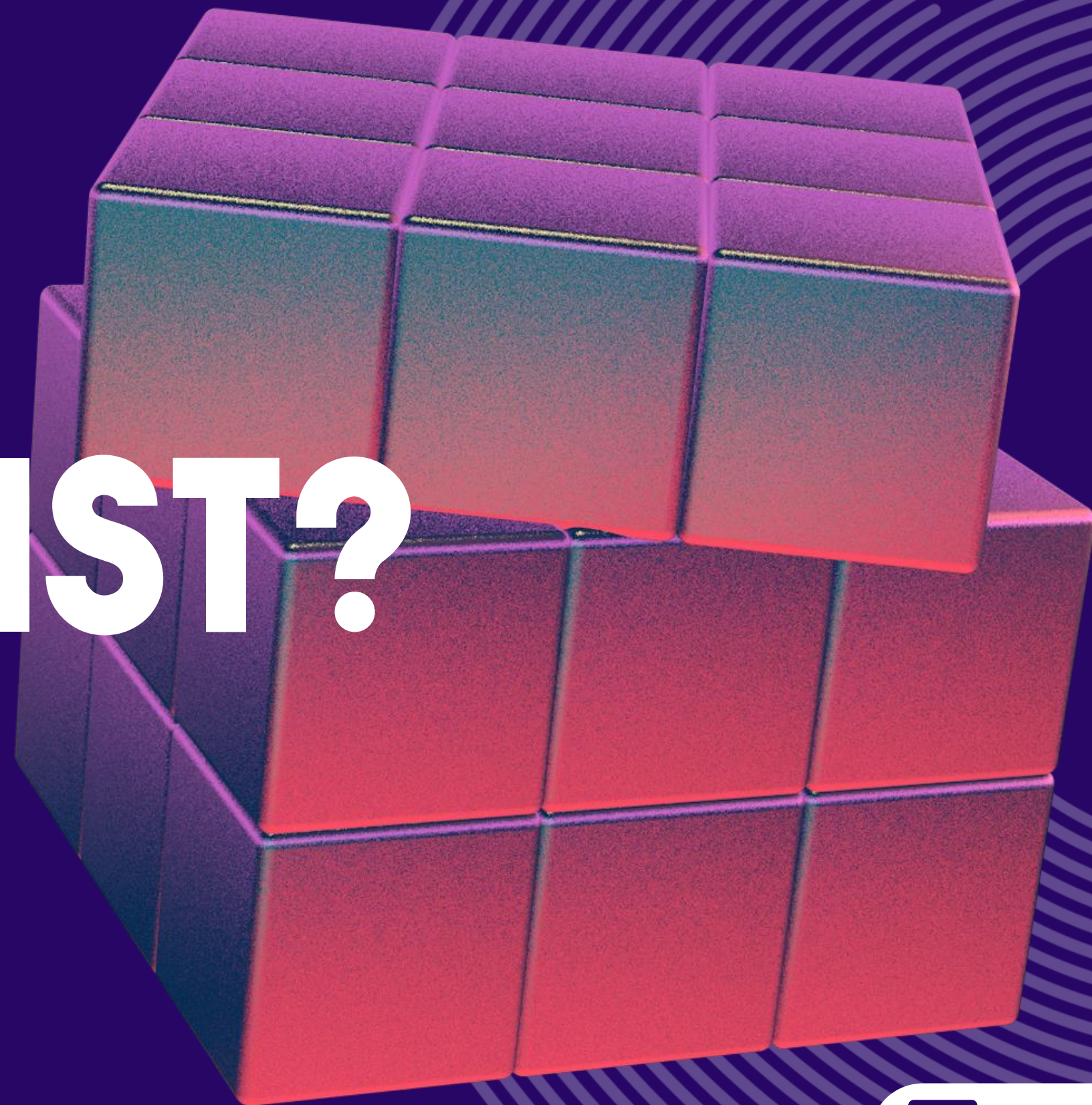
Did the Internet exist in the 90s?



EON INSTITUTE

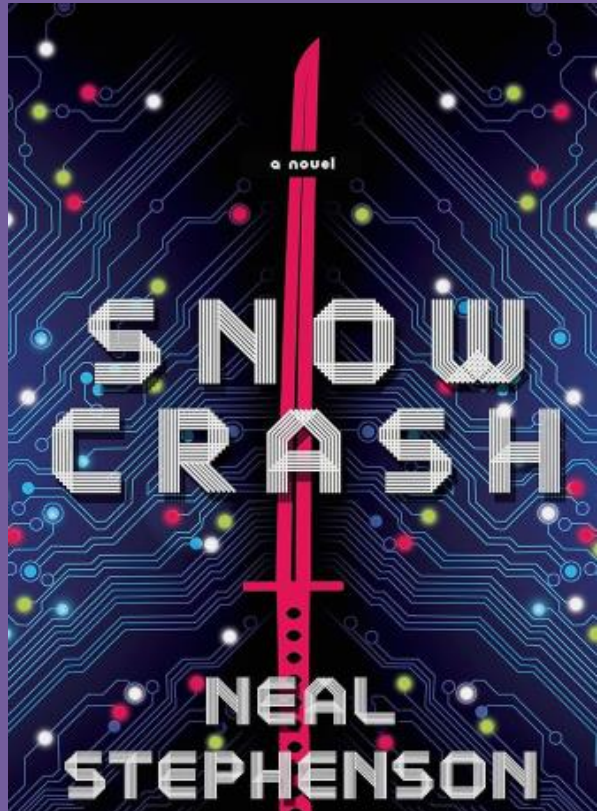
DOES IT EXIST?

What exactly is the Metaverse?



EON INSTITUTE

What exactly is the Metaverse?





ONE OR MANY?



EON INSTITUTE

ONE OR MANY?

Is there one Internet, or many?

ONE OR MANY?

How interoperable will we manage to make it?

METAVERSO

Las oportunidades del futuro

Descarga el reporte



C MINDS

eon
resilience lab

∞ Meta

WWW.METAVERSOLAT.COM 



EON INSTITUTE



[HOME](#)

[ACERCA DE](#)

[ESPACIOS](#)

[SPEAKERS](#)

[CONTACTO](#)

40+ REGIONAL EXPERTS

From 13 LAC countries

PERSONAS EXPERTAS



Antonio Da Rocha

Director de Educación
Aumentada de PleIQ



Carolina Aguerre

Co-directora del Centro de
Estudios en Tecnología y
Sociedad (CETyS)



Chelceé Brathwaite

Profesora del Centro Shridath
Ramphal, UWI



Claudia Del Pozo

Directora del Eon Resilience
Lab de C Minds



EON INSTITUTE

FIRST REGIONAL DIALOGUES

April - August 2022

A FIRST LOOK



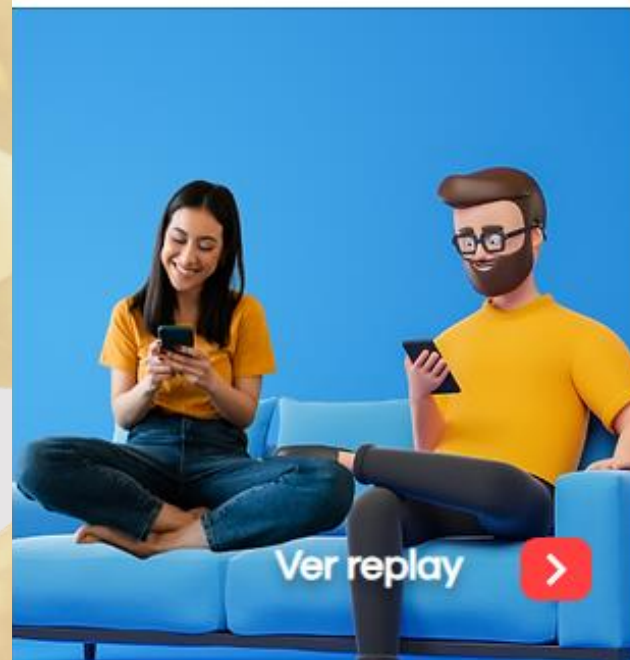
A TOOL FOR DEVELOPMENT AND GROWTH



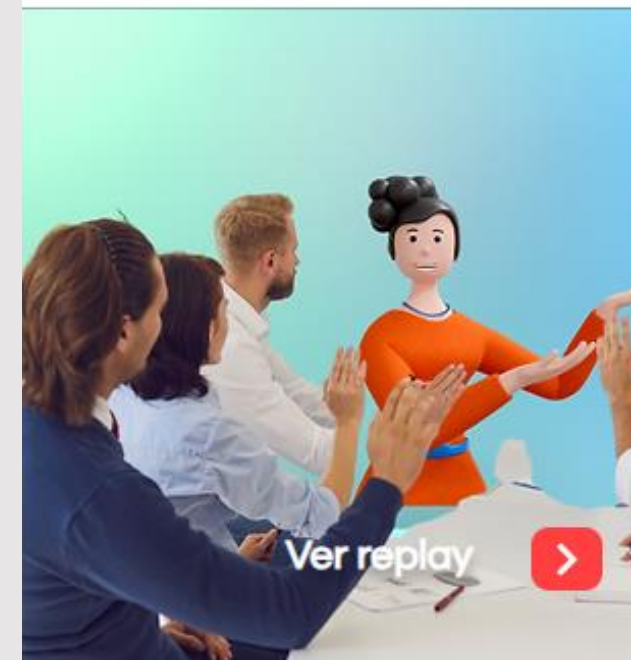
GLOBAL CHALLENGES



HUMANITY & SOCIETY



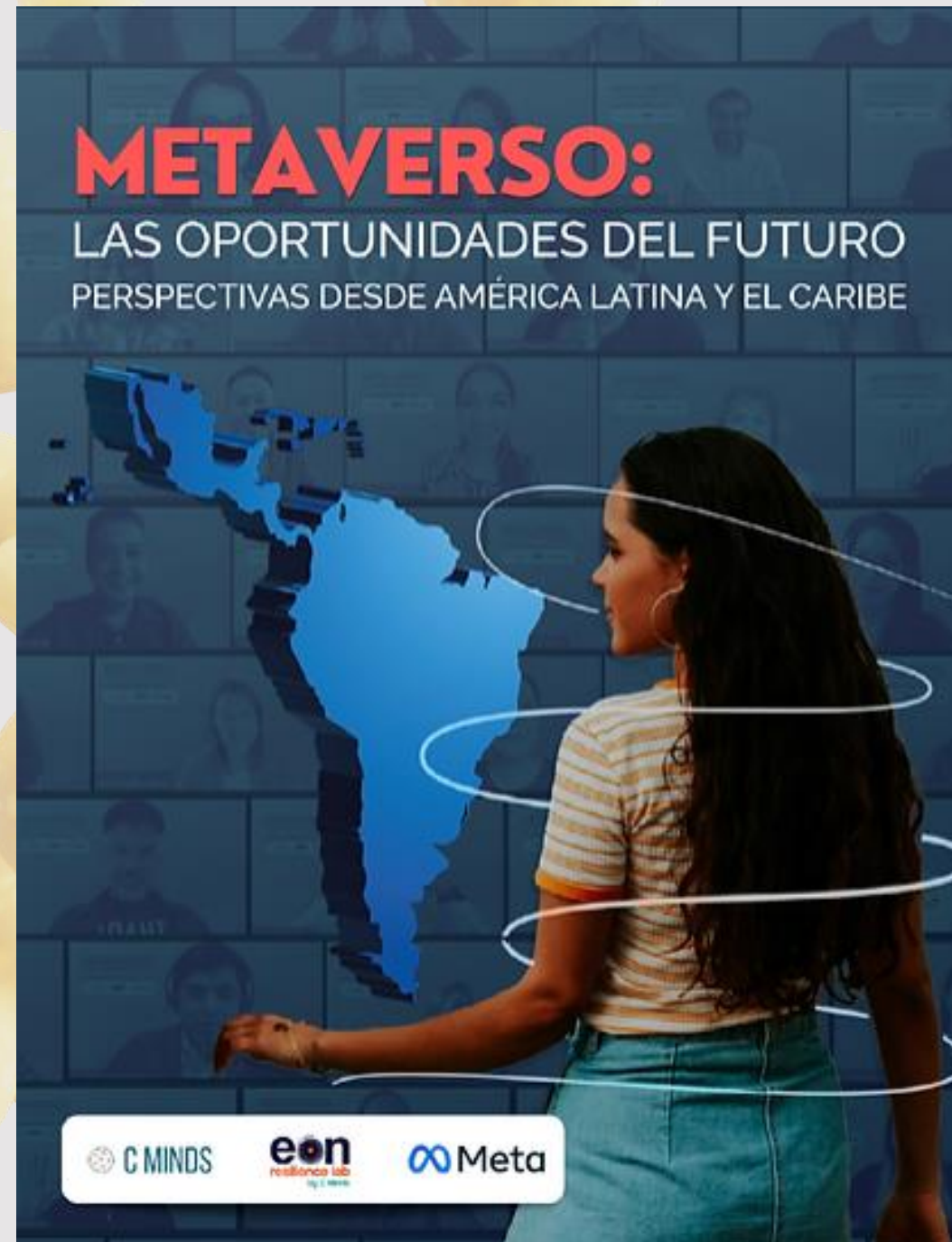
THE METAVERSE IN LATIN AMERICA & THE CARIBBEAN



USE CASES: IMMERSIVE EXPERIENCES



GET THE REPORT



- Expert opinions
- Regional use cases
- Key learnings summary per topic
- Public policy recommendations

OVERVIEW OF POLICY RECOMMENDATIONS



Improve infra +
connectivity reach
and quality



EON INSTITUTE

OVERVIEW OF POLICY RECOMMENDATIONS



Improve infra +
connectivity reach
and quality



Foster local talent



OVERVIEW OF POLICY RECOMMENDATIONS



Improve infra +
connectivity reach
and quality



Foster local talent



Work with
marginalized
groups



OVERVIEW OF POLICY RECOMMENDATIONS

→ Improve infra +
connectivity reach
and quality

→ Promote and give
visibility to local
social solutions

→ Foster local talent

→ Work with
marginalized
groups



OVERVIEW OF POLICY RECOMMENDATIONS

- Improve infra + connectivity reach and quality
- Foster local talent
- Work with marginalized groups
- Promote and give visibility to local social solutions
- Draft a flexible economic framework for capital flow

OVERVIEW OF POLICY RECOMMENDATIONS

- Improve infra + connectivity reach and quality
- Foster local talent
- Work with marginalized groups
- Promote and give visibility to local social solutions
- Draft a flexible economic framework for capital flow
- Create cross-sector working groups for inclusive design



OVERVIEW OF POLICY RECOMMENDATIONS

- Improve infra + connectivity reach and quality
- Foster local talent
- Work with marginalized groups
- Promote and give visibility to local social solutions
- Draft a flexible economic framework for capital flow
- Create cross-sector working groups for inclusive design
- Foster a regional perspective

OVERVIEW OF POLICY RECOMMENDATIONS

- Improve infra + connectivity reach and quality
- Foster local talent
- Work with marginalized groups
- Promote and give visibility to local social solutions
- Draft a flexible economic framework for capital flow
- Create cross-sector working groups for inclusive design
- Foster a regional perspective
- Center around Human Rights + responsible innovation

OVERVIEW OF POLICY RECOMMENDATIONS

- Improve infra + connectivity reach and quality
- Foster local talent
- Work with marginalized groups
- Promote and give visibility to local social solutions
- Draft a flexible economic framework for capital flow
- Create cross-sector working groups for inclusive design
- Foster a regional perspective
- Center around Human Rights + responsible innovation
- Create training material and opportunities for public servants

THANK YOU

Claudia Del Pozo

Eon Institute CEO

claudia@eon-institute.com

