

Global Initiative on AI and Virtual Worlds - *Discovering the Citiverse*

City Leader's Field Guide: Preparing for the AI-Enabled Citiverse

The Practical Readiness Assessment for Mayors, Ministers, and Senior City Decision-Makers



12 May 2026

Christina Yan Zhang, Leader, Evaluation and Assessment Track



Citiverse
Initiative

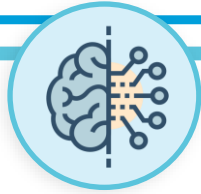
What is the AI-Enabled Citiverse?

The convergence of **AI**, **digital twins**, **spatial computing**, and **immersive environments** into a coherent, sovereign, human-centric urban intelligence platform — *designed to serve human potential, not replace it.*



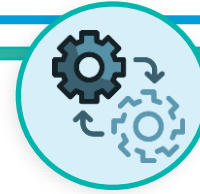
Virtual Worlds & Immersive Environments

Turn complex urban data into immersive, participatory experiences for collaborative city design.



AI Reasoning & Autonomy

Transform static urban grids into cognitive networks that anticipate and adapt in real time.



Digital Twins & Systems Intelligence

Simulate policy and infrastructure impacts across the urban system before real-world implementation.



Robust Data Foundations & AI Governance

Build secure, federated data systems that ensure city-owned data control and power all capabilities.

How to Use This Field Guide?

Three steps. No consultant required. Any city, any size, any budget.

1

Step 1 — Pulse Check

~20 min · Answer 12 Yes/No questions · Find your starting Tier (0–5)
· Identify your strategic focus

2

Step 2 — Essential 20 Assessment

2–4 hrs · Score 20 indicators (0–4) · Document evidence ·
Identify critical gaps

3

Step 3 — 90-Day Action Plan

Half-day workshop · Set priorities · Assign owners and budgets
· Schedule first review



Gather at least three people: your **digital lead**, a **finance representative**, and a **community or communications officer**. This is your assessment team.



Step 1: The Pulse Check — 12 Domains (1)

Answer Yes/No · Count your Yes answers · Find your Tier



Vision

Does your city have a formally endorsed policy or strategy for the AI-enabled Citiverse, digital twins, or AI-powered virtual services, linked to your existing strategic plan?



Barriers

Has your city evaluated its organisational culture and readiness for AI-enabled Citiverse digital transformation and identified who will champion and who may resist?



Use Cases

Has your city identified at least one high-priority urban problem the AI-enabled Citiverse will specifically address with a concrete use case and a line of sight to economic opportunity or citizen benefit?



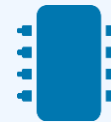
Governance

Are your legal and regulatory compliance risks for digital transformation regularly reviewed and are existing laws that could block or delay deployment identified?



AI Governance ★

Does your city have formal principles or policies governing the use of AI covering transparency, accountability, explainability, human oversight, and bias prevention in public services?



Technology

Does your city have digital twin systems or a live, data-connected virtual representation of city infrastructure currently implemented or actively piloted?

Step 1: The Pulse Check — 12 Domains (2)

Answer Yes/No · Count your Yes answers · Find your Tier



Privacy

Are robust citizen-centred privacy, consent, and data sovereignty mechanisms integrated into your digital services with clear opt-in/opt-out mechanisms for citizens?



Security

Does your city maintain a regularly updated risk register covering safety, privacy, operational, financial, and reputational risks for all digital initiatives?



Inclusion

Are inclusive design principles applied to ensure digital and physical accessibility for all citizens, especially people with disabilities and those with limited digital literacy?



Finance

Has a multi-year budget been identified covering not just the initial build, but the long-term maintenance, operation, and continuous improvement of the system?



Partners

Are all key stakeholders identified – academia, private sector, NGOs, communities – and are structured engagement strategies in place for each?



Impact

Are social, economic, and environmental impacts of your digital initiatives regularly assessed and is there a mechanism to measure whether technology is narrowing or widening inequality?

Step 1: Result — Your City's Tier

Count your Yes answers — each tier has one key objective before advancing

TIER 0 0–3 YES	The Coalition Key objective: Build relationships Find your champions and those who will resist. Write a one-paragraph “why this matters” statement for your city. No document is more valuable than this.	TIER 1 4–5 YES	The Why Key objective: Formalise your vision Draft a one-page statement of intent and identify three high-value use cases that match your city's most urgent civic challenges.
TIER 2 6–7 YES	The How Key objective: Clear your path Audit legal barriers, governance gaps, and AI governance readiness. Secure seed funding for a 90-day pilot.	TIER 3 8–9 YES	The Pilot Key objective: Build and launch Deploy core infrastructure, train your team, and run a minimal viable prototype for one use case.
TIER 4 10–11 YES	The Scale Key objective: Harden and grow Formalise security, trust, AI governance safeguards, and adoption campaigns for city-wide rollout.	TIER 5 12 YES	The Legacy Key objective: Measure and sustain Audit universal access, publish impact and equity data, and share your model globally with peer cities.

Step 2: The Essential 20 Assessment

Score 20 indicators across 12 domains — document evidence for each

SCORING SCALE

- 0 Absent / Ad hoc**
Non-existent or entirely reactive. No plans in place. High implementation risk.
- 1 Aware / Exploring**
Recognised as needed. Early discussions underway. No formal commitment yet.
- 2 Defining / Developing**
Formal processes being created – a draft under review, a pilot under design. Moderate risk.
- 3 Implemented / Operational**
Formally established, funded, and in active use. Solid foundation. Low risk.
- 4 Optimised / Embedded**
Advanced, measured, and continuously improved. Strategic advantage.

12 DOMAINS ASSESSED

- Vision (D1)
- Use Cases (D3)
- **AI Governance ★ (D5)**
- Privacy (D7)
- Inclusion (D9)
- Partners (D11)
- Barriers (D2)
- Governance (D4)
- Technology (D6)
- Security (D8)
- Finance (D10)
- Impact (D12)

⚠ Any indicator scored 0 (Absent) is a showstopper. Address it before proceeding.

ⓘ Any domain with an average below 1.5 represents a significant implementation risk.

✓ Indicators scored 3 or 4 are your strengths – leverage them to accelerate the initiative

Step 2: Result — Interpreting Your Score

0 – 20

Critical Gaps

Focus entirely on Vision (D1), Use Cases (D3), and Stakeholder Mapping (D12). Do not attempt technology deployment.

21 – 40

Foundation Building

Prioritise Governance (D4) including AI Governance (D4-3) and Finance (D10). Lock in a PoC requirement before any procurement.

41 – 60

Solid Platform

Proceed with a 90-day pilot. Focus hardening on Security (D7), Privacy (D6), and AI Governance (D4-3).

61 – 80

Strong Readiness

Invest in Inclusion (D8), Impact metrics (D14), and Investment Signal review (D10-2). Seek peer-city benchmarking.

Step 3: The 90-Day Action Plan

Turn your assessment into your first concrete actions.

THREE QUESTIONS BEFORE YOU BEGIN

PEOPLE

Who is the 'bus driver'?

Name the individual responsible for this initiative's momentum.

MONEY

What is the pilot budget?

The smallest non-disruptive budget for a 90-day experiment.

PERMISSION

Does the mayor say yes?

Explicit support from the mayor or deputy mayor for a sandbox.

FOCUS ON YOUR TIER — PRACTICAL FIRST ACTIONS

T0 (0-3)

Host informal conversations with 3 department heads. Map who will champion and who will block. Write a one-paragraph “why this matters” statement for your city.

T1 (4-5)

Draft a one-page statement of intent. List your top 5 urban problems and select one the AI-enabled Citiverse could address. Identify one university or NGO as a first partner.

T2 (6-7)

Commission a legal gap analysis. Draft AI governance principles covering transparency and human oversight. Identify a small, reallocation-based budget for a 90-day pilot.

T3 (8-9)

Set up the simplest possible cloud-based infrastructure for your use case. Train the core team (5–10 people). Implement basic data privacy safeguards. Define one citizen-facing success metric.

T4 (10-11)

Harden your cybersecurity strategy. Develop citizen trust protocols. Conduct a full AI governance audit before wider rollout. Launch adoption incentives and a public communications plan.

T5 (12)

Commission an independent social impact assessment. Audit all services for universal accessibility. Publish your ROI and equity data publicly. Share your model with peer cities through the Global Initiative.

Review Schedule & Go/No-Go Decisions

01

30 Days

*Progress on Action Plan items 1–5.
Coalition status. Any blockers identified.*

*Are all five actions in motion?
Has political commitment been confirmed in writing?*

02

60 Days

*Evidence collected for scored indicators.
Pilot design confirmed.*

*Is the pilot design approved?
Is the budget secured? Is the team in place?*

03

90 Days

*Pilot outcomes against the citizen
success metric defined at launch.*

*Did the pilot deliver value?
If yes → plan to scale. If no → analyse and adapt.*

04

12 Months

*Full re-assessment of the Essential 20.
Score comparison vs baseline.*

*Has the total score improved?
Are critical 0-scored indicators now at 2+?*

Guiding Principles



Readiness Over Eagerness

Your score is determined by your current, verified capabilities – not your future ambitions. An honest score of 1 is more valuable than an optimistic score of 3.



Human-Centric by Design

Technology is a means, not an end. Embed inclusion from Day 1. The Citiverse succeeds only when it serves human potential.



Local Context Defines the Pathway

This framework is neutral. Your city's unique needs, priorities, and capacities interpret the results and shape your roadmap. There is no single correct AI-enabled Citiverse.



Evidence Over Opinion

Every score requires cited evidence. This transforms self-assessment into an auditable governance tool that attracts investment.



Managed Progression

Build confidence by validating capabilities before advancing. A Tier 1 city that executes stage 1 faithfully will progress faster than a Tier 1 city that attempts stage 3 and fails.



The 'Good Enough' Rule

You do not need perfection. You need progress. If even one indicator helps you deliver a better service to a single citizen, you have succeeded.

Global Initiative on AI and Virtual Worlds *Discovering the Citiverse*

A growing multistakeholder coalition of 70+ partners

Pillar 1 – Bringing Virtual Worlds to Life

- Strategic Guidance
- Digital Inclusion and Accessibility
- Scaling Framework
- Evaluation and Assessment

Pillar 2 – Connecting Cities with the Virtual and Real Worlds

- Emerging Technologies
- Use-case Identification
- Security and Trust
- Interoperable Citiverse
- Sandbox Experiment Facility

Pillar 3 – Tunneling the citiverse

- Citiverse Assembly
- Citiverse Challenge
- Citiverse Alliance
- Awareness Building
- Virtual Worlds Toolkit
- Annual Training
- Talent Grants Programme for Developing Countries

THE GLOBAL INITIATIVE — *DISCOVERING THE CITIVERSE*



City Leader's Field Guide: Preparing for the AI-Enabled Citiverse

*The Practical Readiness Assessment for Mayors,
Ministers, and Senior City Decision-Makers*



This deliverable was led and coordinated by **Christina Yan Zhang** (The Metaverse Institute).



The deliverable is based on the authorship, contribution, support and participation of **Christina Yan Zhang** (The Metaverse Institute), **Dino Cataldo Dell'Accio** (United Nations Joint Staff Pension Fund), **Nicholas You** (Guangzhou Institute of Urban Innovation), **Karl-Filip Coenegrachts** (Open & Agile Smart Cities), **Ernesto Faubel** (European Digital Infrastructure Consortium on Local Digital Twins on Citiverse), **Bruno Lanvin** (Smart City Observatory), **Usha Hayes** (UNICEF China), **Wookyung Jung** (INTERPOL), **MD Khorshed Alam** (UN Tourism), **Jordi Vaquer** (Metropolis- World Association of the Major Metropolises), **Isaac Boateng** and **John Omo** (African Telecommunication Union), **John Wood** (Attract Project), **David Castle** (University of Victoria and Office of the Chief Science Advisor, Canada), **Madan Oberoi** (Google), **Corey Gray** (Smart Cities Council), **Ziad-Alexandre Hayek** (World Association of PPP Units & Professionals (WAPPP)), **Phil Allsopp** (Royal Institute of British Architects), **Erdem Samut** (Istanbul Information and Smart City Technologies Company/Istanbul Metropolitan Municipality), **Takehiko Nagumo** (Smart City Institute Japan), **Noor ul Owase Jeelani** (Great Ormond Street Hospital), **Laurence Moroney** (Arm), **Martin Visbeck** (OceanQuest), **Alvin Wang Graylin** (Virtual World Society), **Hema Sridhar** (Koi Tū Centre for Informed Futures), **Ghassan Aouad** (Abu Dhabi University), **Cristina Garrido** (Anteverti), **Rafael Escalona Reynoso** (Portulans Institute), **Andras Szorenyi** (Global Cities Hub), **Hend Alhazzani** (Public Investment Fund, Kingdom of Saudi Arabia).



The authors extend their sincere thanks to the Executive Committee of the Global Initiative on AI and Virtual Worlds: **H.E. Mr Hamad Al Mansoori** (Director General, Digital Dubai), **H.E. Ms Angellah Jasmine Mbelwa Kairuki** (Ministry of Information, Communication and Information Technology, Tanzania), **H.E. Mr William Kabogo Gitau** (Ministry of Information, Communications and the Digital Economy, Kenya), **Felipe Fernando Macías Olvera** (Municipality of Queretaro, Mexico), **Manuel Barreiro** (Aston Group), **Karl-Filip Coenegrachts** (Open & Agile Smart Cities (OASC)), **Hyoung Jun Kim** (ITU-T Study Group 20 "Internet of Things, digital twins and smart sustainable cities and communities"), **Jaakko Mustakallio** (City of Tampere, Finland), **Paula Llobet Vilarrasa** (City of Valencia, Spain), **Sameer Chauhan** (United Nations International Computing Centre (UNICC)) and **Jeong Kee Kim** (World Smart Sustainable Cities Organization (WeGO)).

The authors also thank the Steering Committee of the Global Initiative on AI and Virtual Worlds for their continued support: **Okan Geray** (Digital Dubai), **Bertrand Levy**, **Paola Cecchi Dimeglio** (Harvard University), **Ernesto Faubel** (European Digital Infrastructure Consortium (EDIC) on Local Digital Twins), **Martin Brynskov** (OASC), **Anish Sethi** (UNICC), **AnaMaria Meshkurti** (AMVS Capital) and **Roland van der Heijden** (City of Rotterdam, The Netherlands).

The authors also extend their gratitude to the **Cristina Bueti**, **Yining Zhao**, **Chiara Co** (ITU) and **Franca Vinci** (UNICC).

Global Initiative on AI and Virtual Worlds - *Discovering the Citiverse*

Thank you!



virtualworlds@itu.int

itu.int/metaverse/virtual-worlds/



**Citiverse
Initiative**